

P.O.Box 6946  
Riyadh 11452  
Kingdom of Saudi Arabia

Mobile: + 966 505.275.074  
Office: + 966 11 461.0305  
Fax: + 966 11 461.0306

[www.a-sosak.com](http://www.a-sosak.com)  
[info@a-sosak.com](mailto:info@a-sosak.com)

**SOSAK®**  
Contractors & Interior Designers





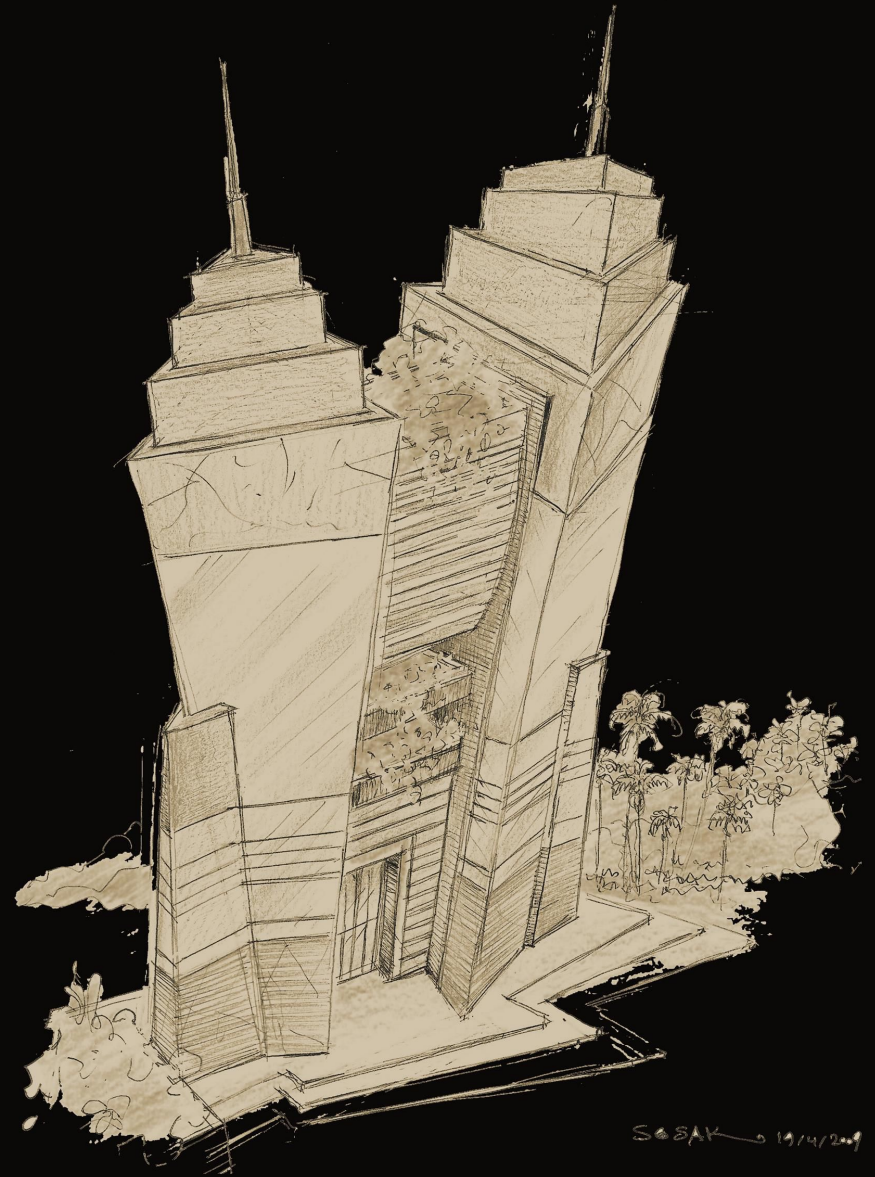
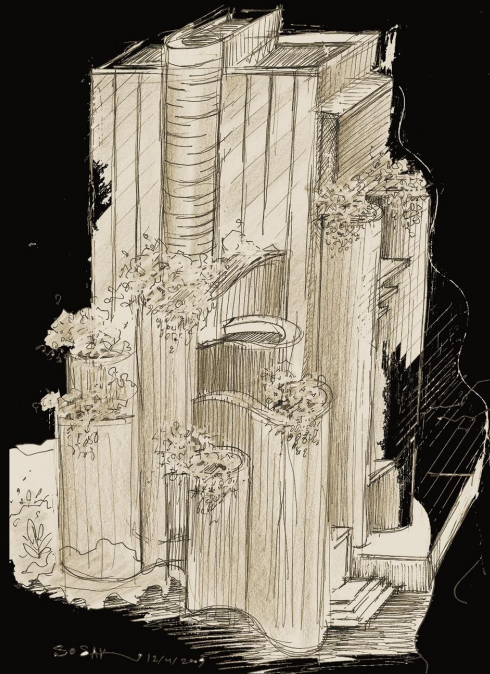
limited liability company,  
construction contracting,  
interior architecture for energy and renewable energy projects



## INTRODUCTION

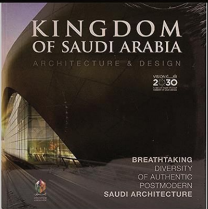
Over the past two decades, SOSAK has acquired a reputation for unique and luxurious interiors and exteriors.

Our clients are selected from a varied spectrum of discerning private and public sector owners, with whom we often form long-term relationships.



# ABOUT US

In the year 2003, ASAAD SOSAK had a dream to achieve exceptional results underpinned by an approach to design. Since that time, Asaad leads a talented team of creative interior designers, architects, and support staff all passionate about their work who contributed to the Design, Construction, Execution, and Supervision of Imaginative, Unique, and Luxurious large scaled projects varying from residential to commercial. We choose and Import Furniture and Accessories from the best European and American manufacturers to best support our projects.



- \* Brought up in Syria, Asaad holds a Bachelor of Fine Arts from, the University of Damascus, in 1979.
- \* 1978 Asaad won the second prize for designing The Memorial of The Unknown Soldier in Damascus Under the supervision of the Ministry of Defense at the time.
- \* Held the position of Deputy General Manager and the Technical Department Manager at Efaa LLC (a company specializing in Interior Design and Furniture from 1990 to 2003).
- \* Sosak also is the owner of Sosak is the founder of SOSAK REAL ESTATE CO W.L.L, in the Kingdom of Bahrain , and he is the founder and general manager of SOSAK CO L.L.C in K.S.A which is engaged in construction, interior design, and newly renewable energy projects.
- \* In 2016 Sosak won 2nd place in “LUXURY INTERIOR DESIGN COMPANY IN SAUDI ARABIA” at THE LUXURY LIFESTYLE AWARDS in the Middle East and Africa.
- \* Participated in the book KINGDOM OF SAUDI ARABIA Architecture & Designer (VISION 2030)
- \* Participated in the book TOP ARCHITECTS Middle East.





#### PROFILE

One of SOSAK most vital qualities remains the creative interpretation of space and proportions.

Each project is considered uniquely, specifically tailored to a client's requirements to achieve their perfect environment.

Our approach is architecturally and internally led, where attention to detail and design is a keen focus.

Merging the parallel disciplines of 0 can specify right down to the last artwork and accessory with furniture and furnishings sourced internationally and where appropriate, designed and commissioned individually.



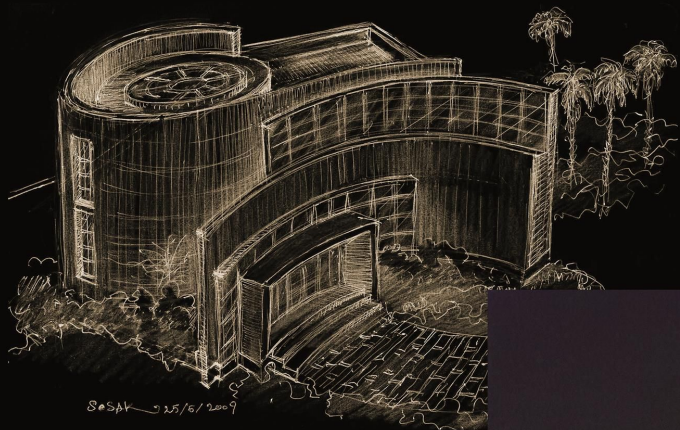
## SERVICES

SOSAK offers a full range of interior and exterior design services from initial space planning and conceptual design through to interior architectural documentation and furniture installation.

- Interior Design.
- Architectural Design.
- Landscape.
- External and Internal Sectors to clarify Ideas and Finishing Materials
- Distribution and import of furniture projects commensurate with the project's design ethos of the finest manufacturers in Italy, France, Great Britain, Spain, and America.
- Selection of Art Works and accessories
- Interior and Exterior Flooring Design and detailed Material Selection.
- Ceiling Designs with a complete study of Lighting and Air-conditioning.
- Detailed study of Kitchen and Sanitary Appliances.
- Colorful 3Ds illustrating the ideas proposed.
- Animation Execution and Design in the event of a demand for any project of any size
- Public Construction Site
- Construction Building works
- finishing works







## TWIN VILLAS

ARCHITECTURE / INTERIOR / EXECUTION

CATEGORY: Private Villa

LOCATION: AL Ghadir Neighborhood

PROJECT YEAR: 2009

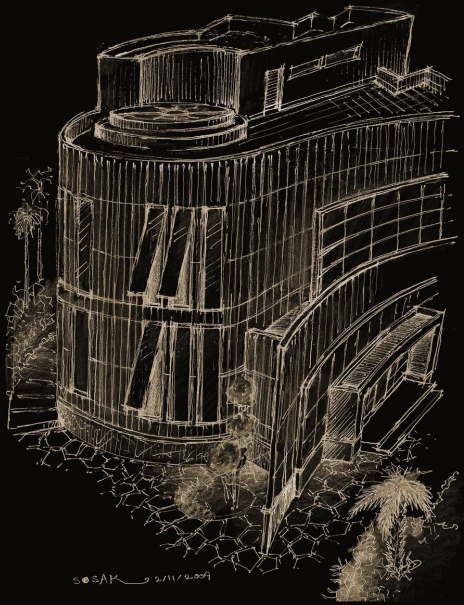
AREA: 1840 m<sup>2</sup>

The proposal comes with the need of making two twin villas for two brothers. The program was extensive and the lot was reduced, for which it was proposed to generate common areas that could be shared among users, optimizing the use of the land.

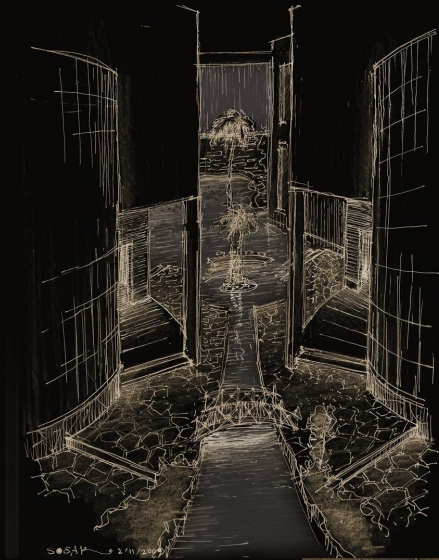
The twin villas were aptly named Round House is a geometrically unique structure.







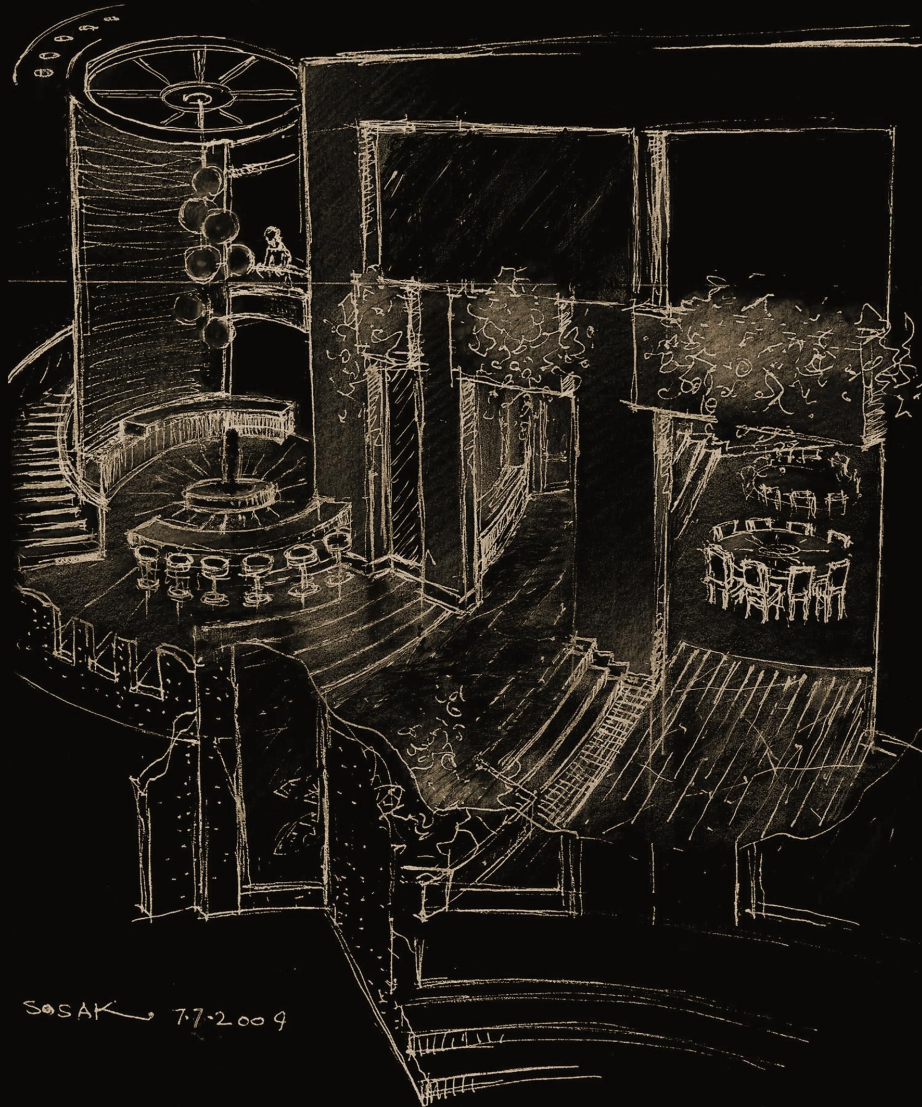








The courtyard connects to the twin villas through a dynamic swimming pool and walkway and with abundant trees and blossoming flower beds on either side. The expansive glass windows offer unhindered views of the scenic splendor around, enriching the visual experience.



From the main entrance, visitors can effortlessly progress through the open-plan living room, kitchen, and spacious deck before circumnavigating the house via a wrap-around walkway. A concentric hallway traces the kitchen, leading to discrete pie-shaped rooms carefully arranged to demarcate private from the public space.





A large circular skylight streams daylight into the kitchen, creating a makeshift sundial that illuminates different sections of custom curved casework throughout the day.

By making optimal use of daylight, views of the green surroundings, and a layout that encourages movement and meeting, SOSAK's new building also contributes to the well-being of its users."





Creativity in creating exceptional ideas for interior design and architecture results from SOSAK's passion for taking care of small details and giving a different identity to the interior design of each villa individually that reflects the personality of its residents.





Due to the challenges of its circular form, the project team had to look for creative solutions in each aspect of the venture. Most conventional solutions favor straight geometry, which made for a refreshing intervention that is an honest response to the constraints of this unique project.







The material palette is comprised of warm colors of marble flooring designed and harmonious high-end furniture selected to complement the unique system in this project.

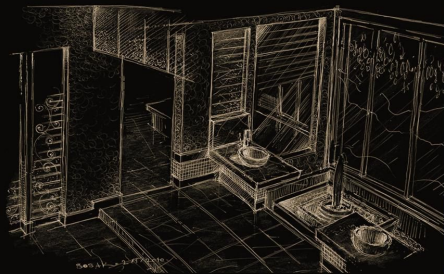




The design of the ceilings is an important part of the interior composition, distinguished in the two villas by its lines as an integrated painting (musical piece) and the distribution of light that increases the beauty and strength of the composition.

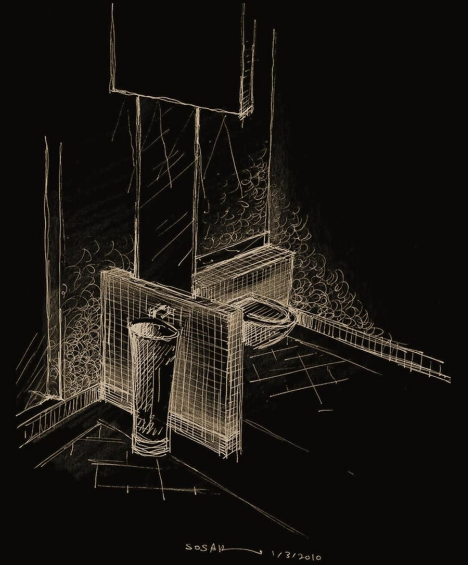




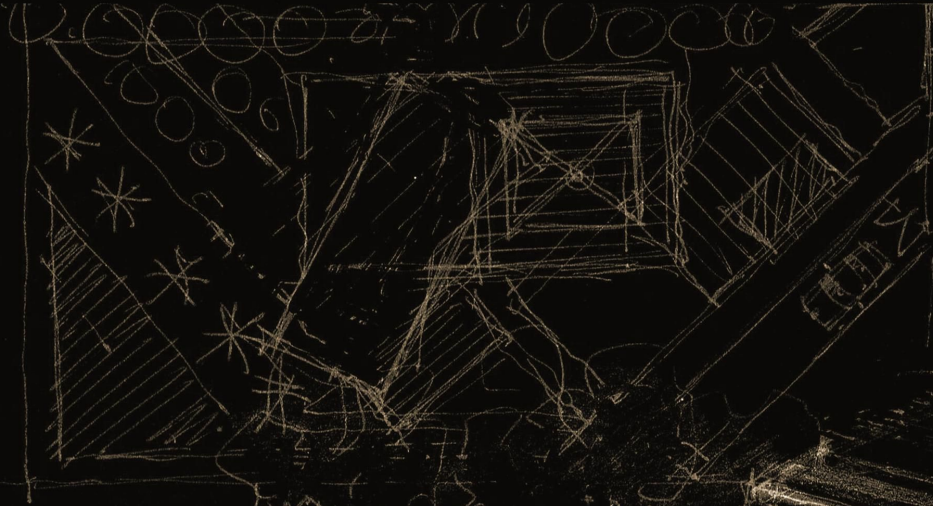


## BATH

Here, the unique bath design with clean, sharp angles adds an ultra-modern and minimalist edge.







## HETTEN PALACE

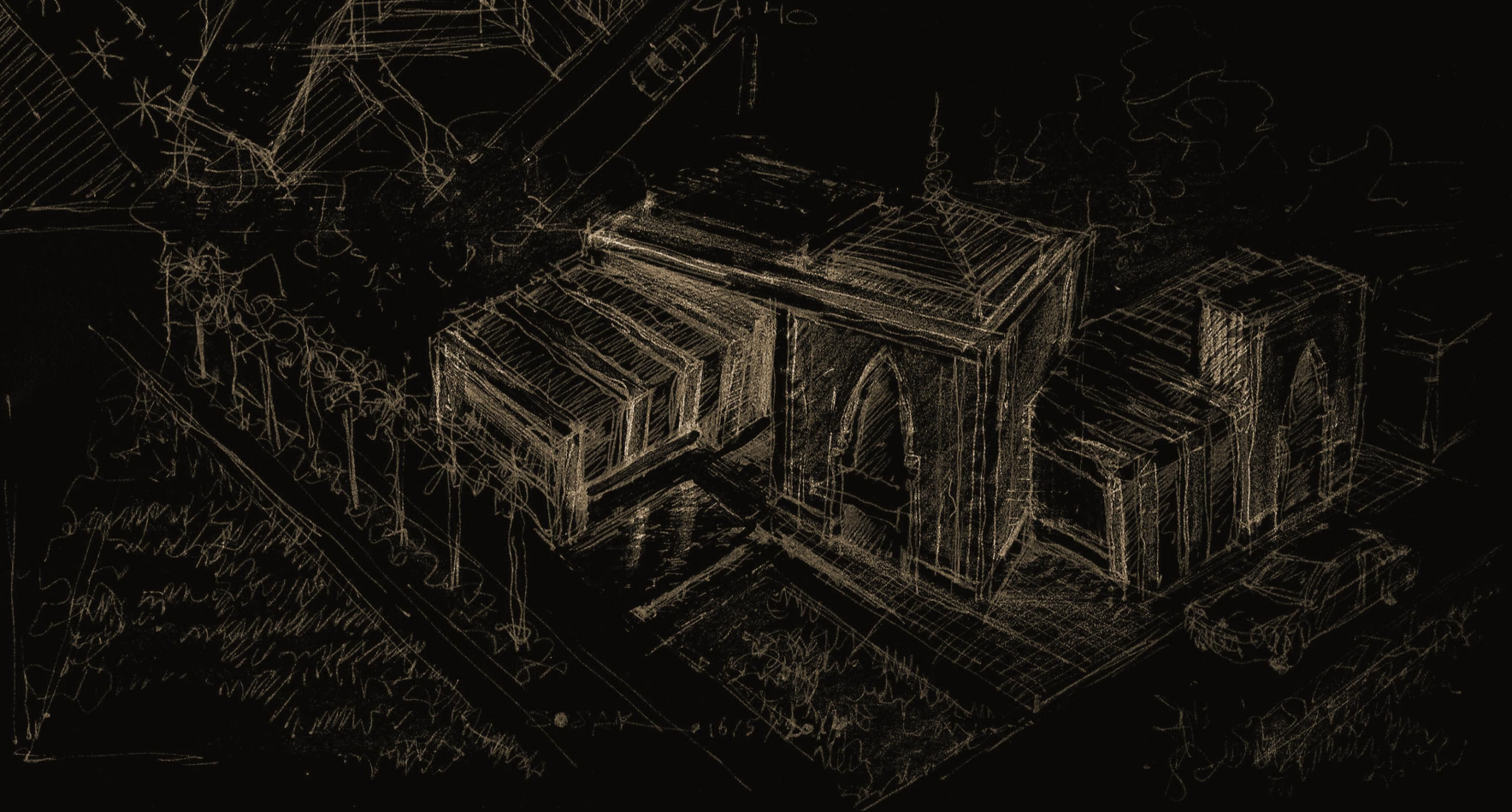
ARCHITECTURE / INTERIOR / EXECUTION

CATEGORY: Privet Palace

LOCATION: Hetten Neighborhood

PROJECT YEAR: 2017 - 2018

AREA: 3360 m<sup>2</sup>







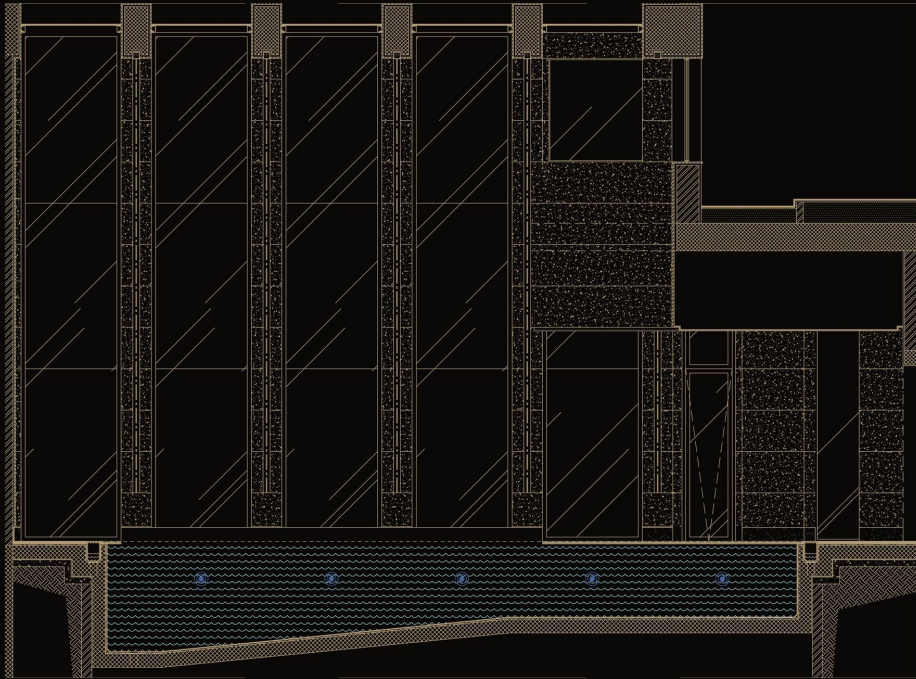
The desire to bring all of our disciplines to this villa was born out of a vision to help our client create a truly exceptional home, as we are adept at working in a range of architectural styles, whether classical, contemporary or eclectic mix. Our architects' briefs are limited only by the imagination in devising successful plans for everything.

In this house, the challenge was to create a house that combined modernity and classical in a warm and unorthodox harmony.

The beginning was with the façade inspired by Andalusian lines, then simplified the lines, distributed the light that increased the beauty and strength of composition, and added a wall and a modern gate.

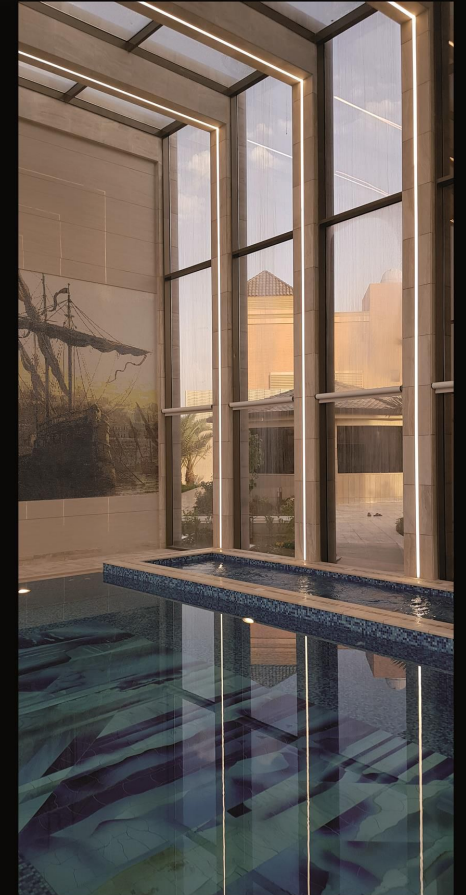
From the first moment the visitor comes to the house, he learns that the engineer takes him on a trip to a classical space dominated by the spirit of modernity, and middle classical sometimes without realizing where the class started and where modernity came through a high entrance door inspired by Andalusian lines and marble magnificent design flooring with arches made of solid polystyrene, A simple geometric arrangement surrounded by walls that combined the present and the past with a wonderful harmony between marble, stone, wood and contemporary furniture.





#### SWIMMING

A sumptuous style built on the combination of the elegant background of Navona Travertine and British Handmade ceramics designed for the swimming pool and jacuzzi, while the double-height glass ceiling and wide windows increase the sense of natural light which lead to a well-conceived space that is bathed in natural light; one of the prevailing features of this home that provides a suitably comfortable position from which to overlook the multitude of activities in the garden. While enjoying swimming.





LANDSCAPE

SOSAK believes that Outdoor Privacy Screen is the best way to feel as great. As having a backyard, garden, or patio where the clients can spend quality time alone or with friends. No matter how comfortable the furniture is or how green the color of the grass is, you can't feel relaxed if there is no privacy.

The Garden is formed by curves, indicating the main direction of transit through the yard and enveloping the functional accents. Island-shape zones are oases of landscaping.





LANDSCAPE

On the center of the garden axis, SOSAK adds  
A Baroque fountain that jets water into the air for  
a decorative dramatic effect, which adds  
a more poetical way that reflects the ritual sense  
of meditation and serenity.

Under the islands, there is evening  
illumination. Unique boards and niches are  
provided for this purpose. This design makes the  
visual levitation effect of islands.





DINING

In this elegant dining room, we used a streamlined approach to the design utilizing a palette of complementary soft tonal colors to increase the sense of natural light and space while at the same time adding sophisticated accents producing a luxurious and light open space.

Our mission was to realize an ideal balance between elegant natural materials, Navona Travertine, and wood cladding, to create a tempting atmosphere at all times of the day, not only for lunch but for dinner as well, during both formal and informal occasions.



LIVING

On the second floor, we used a streamlined approach to the design utilizing a palette of complementary soft tonal colors to increase the sense of natural light and space while at the same time adding sophisticated accents producing a luxurious and light open space.

Our mission was to realize an ideal balance between classical elegance and welcoming coziness through modernizing to create a truly bespoke living space, achieving an unparalleled level of luxury and comfort.











## BATH

Even in bath design, SOSAK continues to tell his story. His ability to rebellious designs and to combine materials, brushes and colors is evident in the bathrooms of this luxurious palace.

The meeting between luxury, success, sophistication, and elegance had its charm when he combined two glazed ceramic sinks in metallic silver and the other in metallic gold.





FURNISHING

Establishing a close working relationship with our client was key to getting the most out of this, and every design project we undertake. Thus, this was the third project that the client assigned us to design.



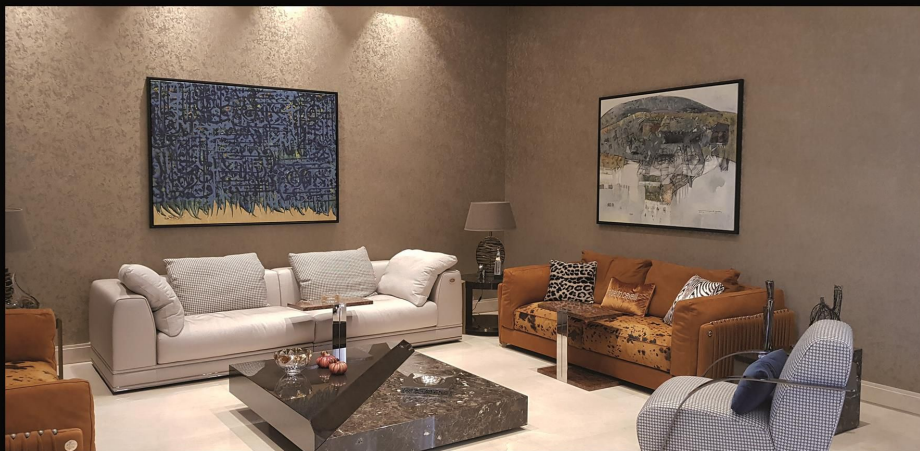
For this project, a warm palette is dominant throughout, and this married our client's sophistication along with a clear identity that carried through the home.











Sosak's approach Combined with beautifully chosen furniture from high-end brands and soft furnishings in a livable palette of warm tones and rich textures, is a sophisticated example of modern, city living.







### GHADA ABDUL AZIZ MOSQUE

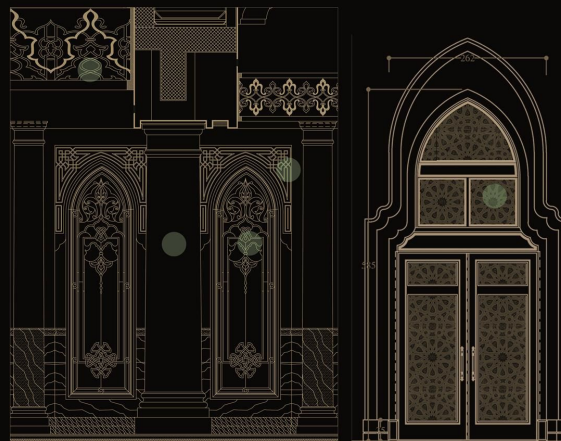
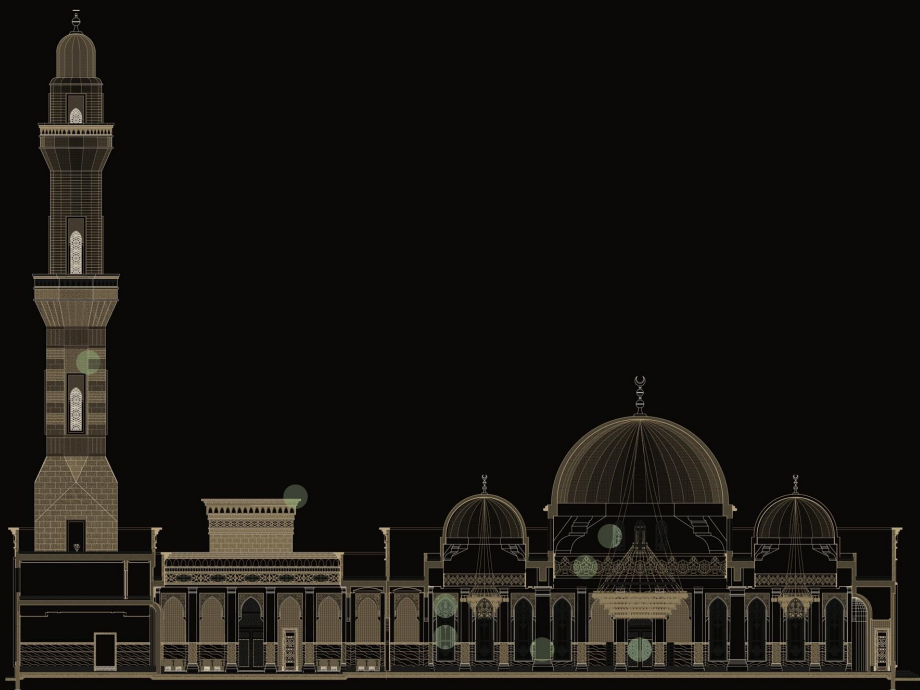
INTERIOR / EXTERIOR / CONSULTING –  
Modify Architectural Plans.

CATEGORY: Religious - Mosque

LOCATION: Al Aqiq Neighborhood - RIYADH

PROJECT YEAR: 2010

AREA: 5655 m<sup>2</sup>



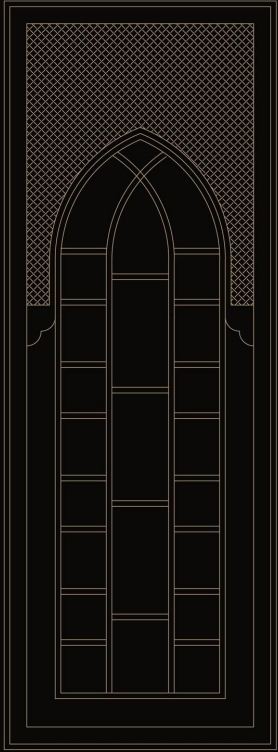
The ambition of the project was to develop the traditional classical design of the mosque into one that combines classic and modernity while preserving the identity of the design.

SOSAK team modified the study of the columns bearing the central dome to suit the size of the dome. The central dome and the eight surrounding domes were decorated with gypsum engraved with floral and geometric motifs, and the space between them was divided into gypsum strips that connected the bridges of the domes. The windows of the rotunda were decorated with stained glass to allow those inside the building to see the world outside.

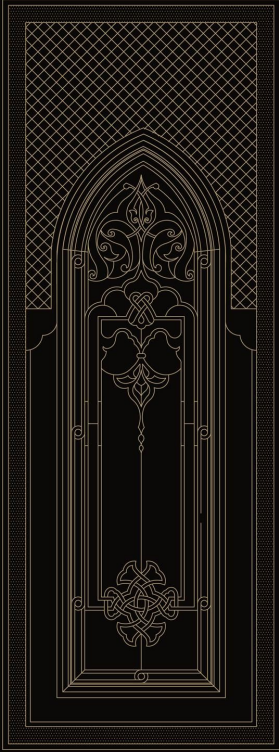




The external facades are decorated with GRC panels decorated with botanical motifs inspired by the windows, and the external formation of the facades is closed with a cornice that contains geometric motifs.



Old Design



Sosak Design





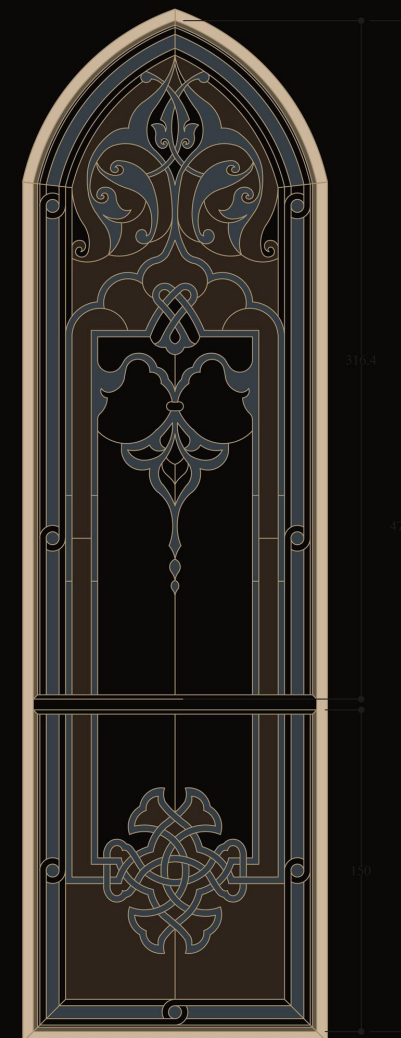
The space between the eight domes was divided into gypsum strips that connected the bridges of the domes and were painted white to give more height and to give the worshipers a feeling of purity, cleanliness, and tranquility.







The Sosak team has redesigned the facades, elegantly combining traditional and modern elements with stained glass windows. Decorations in this context added luminous ornaments to the walls, where light penetrates the stained glass and highlights the lavish patterns on the interior surfaces.







The hallways were distinguished by a set of unique columns that look like a wall surrounding the prayer hall and the outer courtyard with a length of 38.70 meters on each side and covered from the inside with small gypsum domes. The hidden lighting added to its beauty







ELEGANCE TOWER

INTERIOR

CATEGORY: Commercial

LOCATION: Al Morooj Neighborhood - RIYADH

PROJECT YEAR: 2012

AREA: 8577 m<sup>2</sup>



The vision of the project was to create a unique, colorful, and vibrant space that allows tower visitors and employees to both feel a sense of spaciousness and comfortable whilst simultaneously transporting them into a world of fresh and exciting possibilities.





The main focal point of Elegance Tower is created by the large waterjet marble pattern cladding walls reaching an overall height of seventeen meters, to the right and left of the entrance of the tower's open lobby.

These walls that were designed by SOSAK coincide with its marble floor, which both gives a sense of movement to the space and presents a reflection of light.



Following the unique concept is the design of the entrance wall of the tower, which can be found directly mimics the appearance of the marble floor and the three-dimensional spatial







# SWIMMING POOL

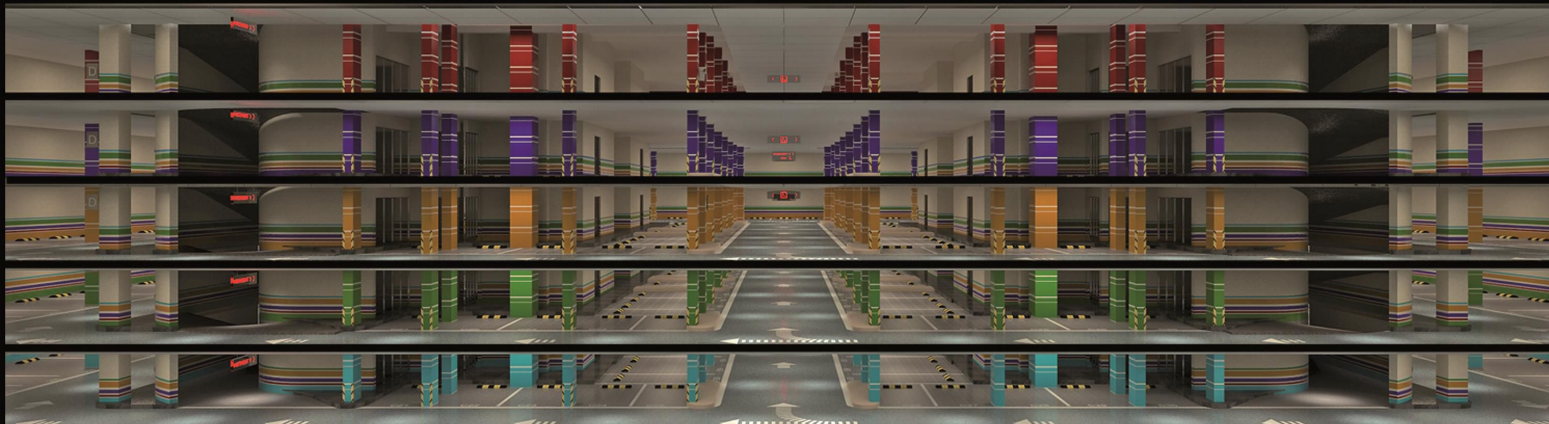
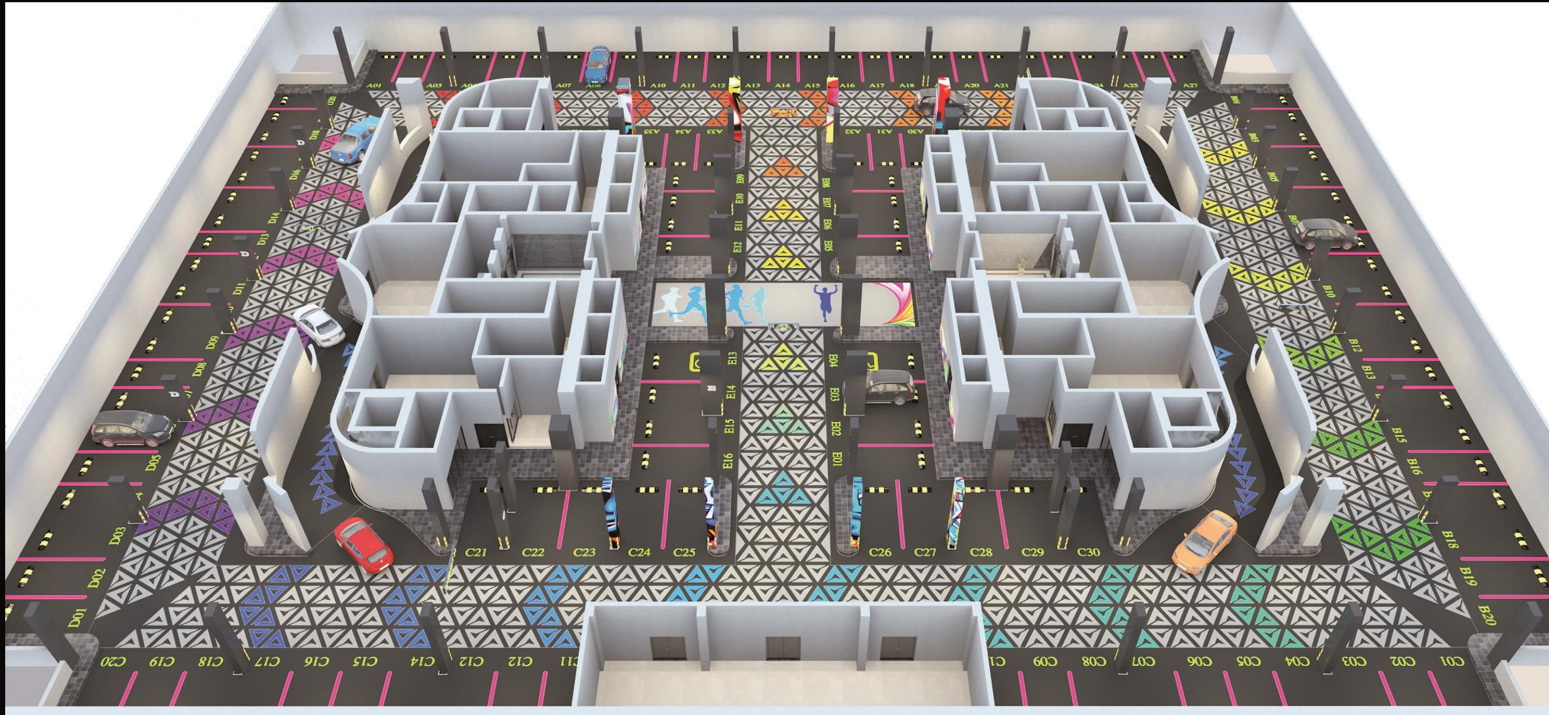
The contemporary 18-meter outdoor swimming pool was designed by SOSAK to grant relaxation, with stunning views, this pool is not only suitable for sporting activities but, as a non-swimmer pool and offers plenty of room for movement for ambitious water sports enthusiasts.

One further highlight of this pool is the Large-surface marble facades, Faience Tiles Panel, subtly designed swimming pool floor mosaic tiles, and carefully selected colors that lend the pleasantly calm atmosphere in harmony with the surrounding outer space.

this is a journey through collections, colors, and décor motifs able to let surfaces become the real protagonist of any interior space







## PARKING

In the underground car park of Elegance Tower, graphical images show you which way to go by their movement in a certain direction, these images are complemented by word poems and intense color.

Parking garages usually have to do with a negative connotation but here it feels safe.









# AL MULLA OFFICE

Renovation

CATEGORY: Commercial

LOCATION: Al Sulimaniyah Neighborhood- RIYADH

PROJECT YEAR: 2013

AREA: 325 m<sup>2</sup>

The ambition of the project was to change a residential building to a commercial one in order to accommodate an innovative company, while responding to the values of future occupants, between the flexibility of workspaces.

The building is designed as the juxtaposition of noble materials with raw materials, thus, concrete, wood, terracotta, GRC, and aluminum face each other in different spaces.

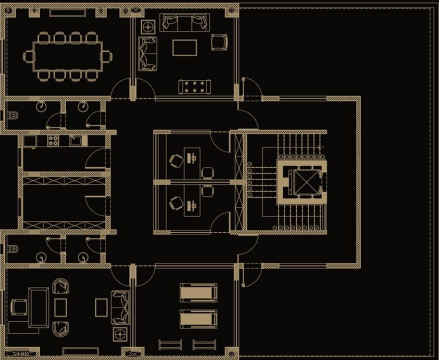
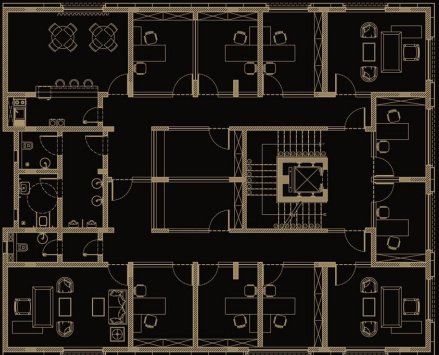
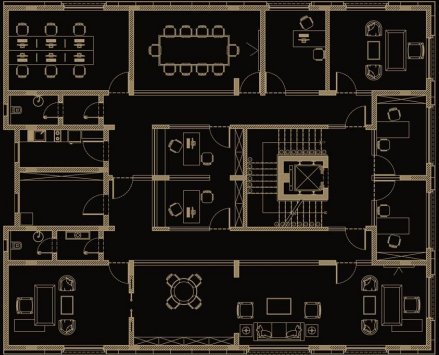
The design of the facades was changed and more glass spaces were added to bring in light and create more creativity among the employees and harmonize with the major modifications that took place inside.



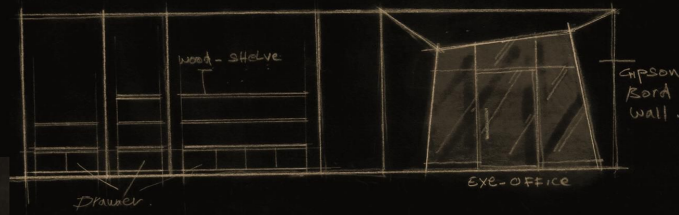


The first floor was converted into offices, management, and meeting rooms, while the second floor was converted into offices and a staff lounge to add flexibility and helps employees unwind. while service areas were distributed on all floors.

Finally, the rooftop was converted into three areas - one for more offices, a meeting room, another for a fitness room, and the third one for an opening botanical garden, and lounges.

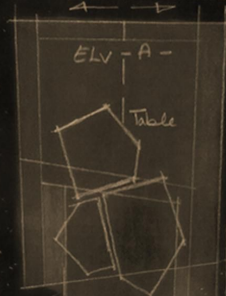
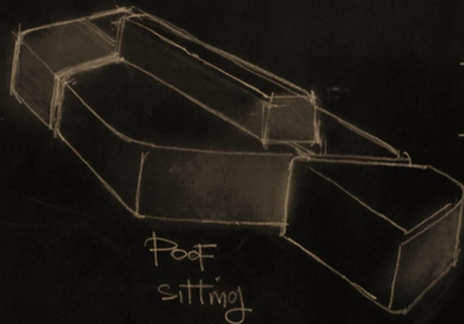


Based on the client's desire, the space on the ground floor was divided into two areas, one for the reception and the other completely separate, designed by Susaq to be an evening wear boutique for the client's daughter, who is a fashion designer.

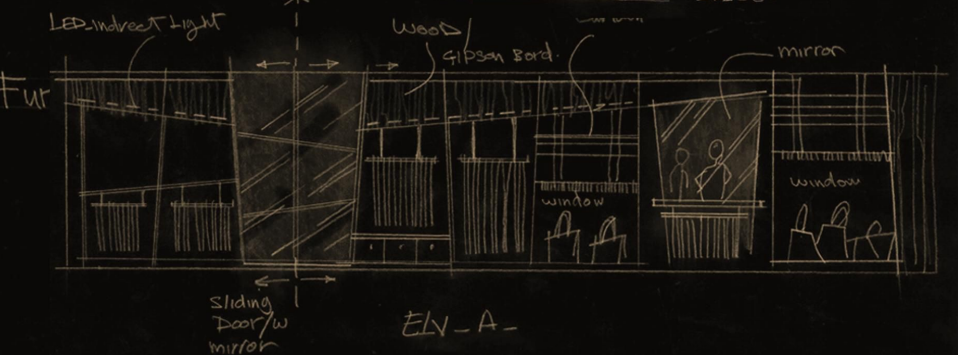
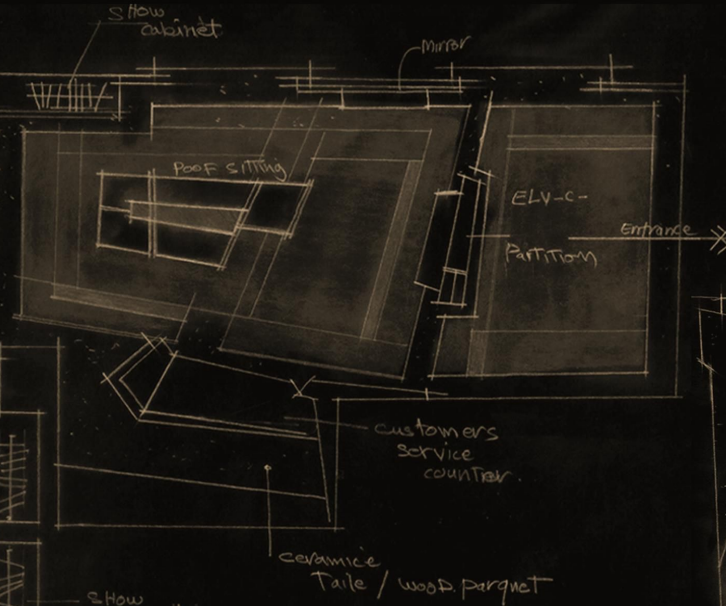


ceramice Tile  
or/wood parquet

Show cabinet



carpet/  
wood Parquet





## AL MULLA PALACE

Renovation

CATEGORY: Privet Palace

LOCATION: AL RIYADH

PROJECT YEAR: 2010

AREA: 3200 m<sup>2</sup>

The clients fell in love with this old place with an area of 3200 m<sup>2</sup> which spurred their desire to open and modernize the design.

Our team set out to craft a respectful enrichment of the home's original form with a contemporary, spacious layout and classical decorative plaster moldings to create a stylish yet modernized look



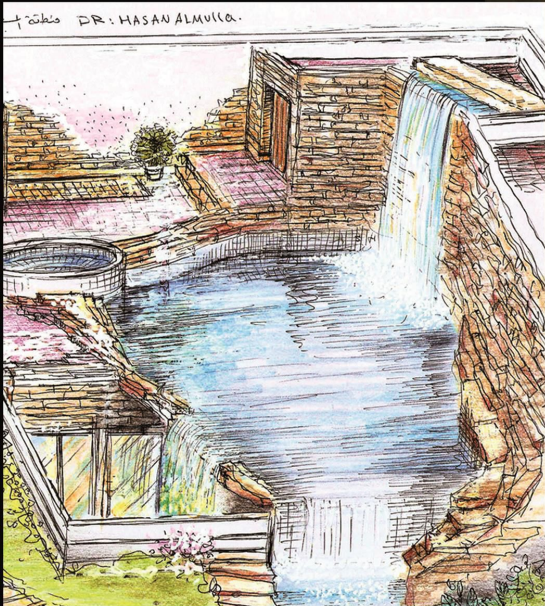






The biggest challenge was the construction of a basement for this palace to be used as an entertainment area and the construction of a floating swimming pool above it with a service area belonging to it, which required a lot of calculations for the construction and six months of hard work and activity to dig this basement in this rocky area

SOSAK built an infinity-edge pool over the basement to create the illusion of a continuous body of water right to the basement, distinguished by its natural lines and waterfalls, which were executed with great skill to create the natural spirit of the water bodies that permeate the green areas.







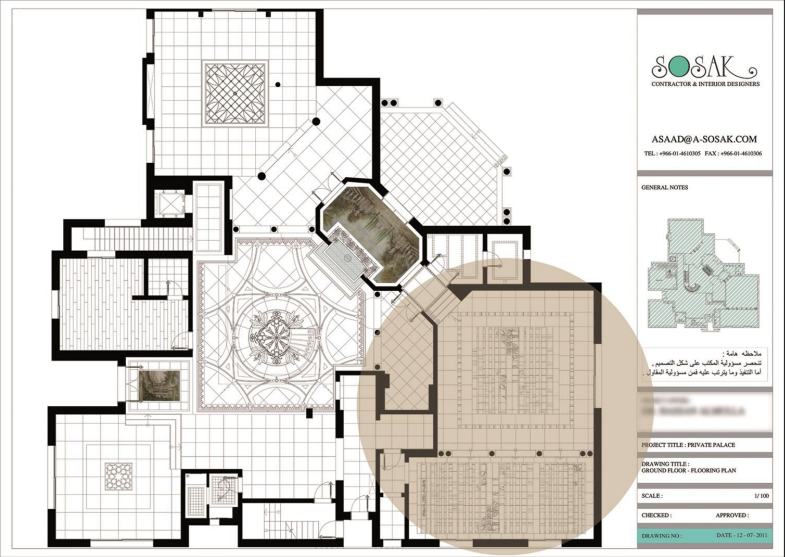




Our team set out to craft a respectful enrichment of the home's original form, focusing on a client-sensitive response to removing the old stair leading to the first floor. Leading to the first floor of its place and creating another in a way that provides more open space and comfort for the living area.













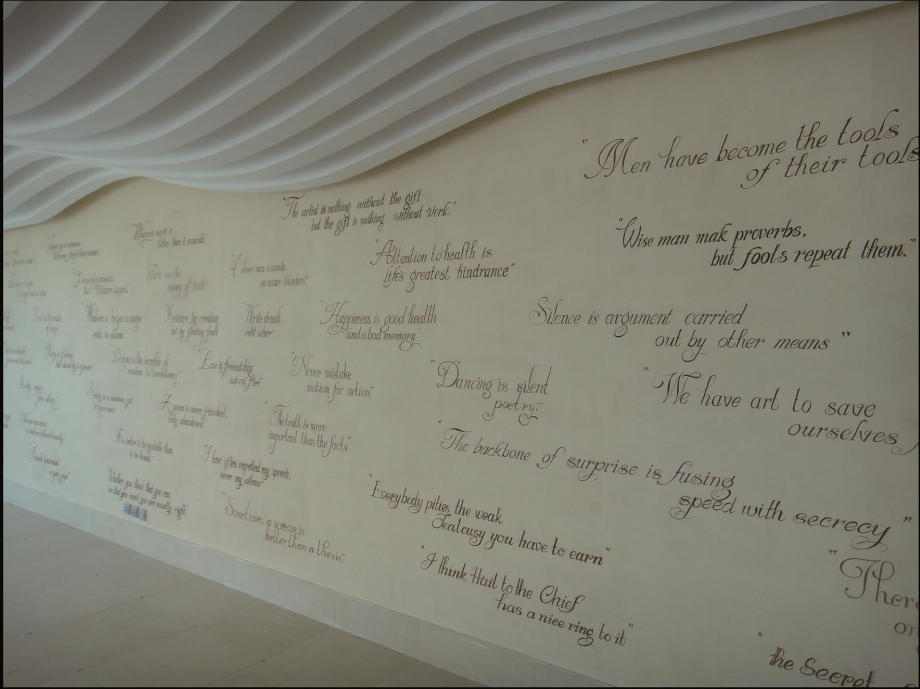








The results are subtle, but the work behind it was precise and intense: Walls were torn down, new spaces were created, and the palace was renovated, to adapt it to the needs of the owners and achieve sophisticated and luminous rooms.







## REST HOUSE

INTERIOR

CATEGORY: Privet Rest house

LOCATION: AL RIYADH

PROJECT YEAR: 2014

AREA: 2000 m<sup>2</sup>

This project meant as a second home for quiet retreats as well as larger gatherings, eventually, The building was distinguished by the full glass facades overlooking the open courtyard, which had an impact on the study of interior design. It produced a simple geometric arrangement surrounded by walls that combine hardness and transparency in a wonderful harmony between marble, glass, and wood



## Winter Lounge

In this elegant lounge, we used a streamlined approach to design using a palette of warm, complementary color palettes to increase the sense of natural light and space while adding sophisticated touches at the same time to produce a luxurious and light open space.

SOSAK used, Navona Travertine, and wood cladding, to create a seductive atmosphere at all times of the day, not only for lunch but also for dinner, during formal and informal occasions. The result is a series of characterful, timeless spaces that are enlivened with the introduction of natural light and a responsible, considered palette of materials.





## SWIMMING

Modern style is built on a combination of elegant marble backdrop and small waterfalls pouring into the pool, while wide windows heighten the sense of natural light that leads to a well-designed space bathed in natural light.



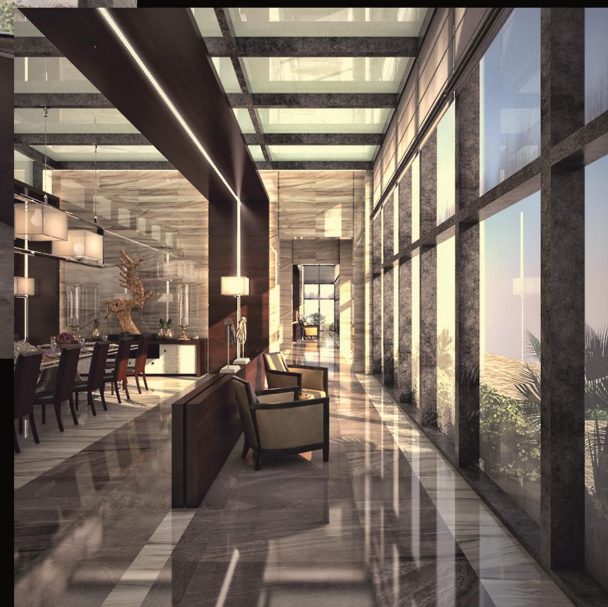




#### SITTING AND DINING

SOSAK team used a design approach using a palette of traditional warm colors to increase the sense of natural light and space while adding sophisticated touches at the same time to produce a luxurious and light open space.

SOSAK's goal was to strike a perfect balance between elegance and welcoming comfort by modernizing to create a space of unparalleled level of luxury and comfort.







## BAHRAIN 3501

INTERIOR

CATEGORY: Apartment

LOCATION: MANAMAH

PROJECT YEAR: 2022

AREA: 124 m<sup>2</sup>

The challenge in this project is to hand it over to the tenant within 20 days.

The objective of this renovation is to change it from a standard apartment to a distinctive combine classic and contemporary design accents that together create a bright, airy, and minimalist interior, and adjust spaces for contemporary living, which led us to find ingenious solutions to enhance the feeling of spaciousness.

Existing laminate tiles were lackluster and did not match the sophistication required. SOSAK removed it and use gray terrazzo tile and choose a unique wallpaper to highlight these elements.





In the interior scene, shades of gray predominate, reflecting the contemporary taste for neutral tones.

SOSAK chose furniture from Italian Brands giving the project a touch of modernity and sophistication.





Modify the kitchen and bring an interesting play. Within the open layout, SOSAK aimed to make each area feel special, and unique yet still visually connected and balanced.

A set of cabinets decorated with horse head were chosen for the dining space to create a foyer experience but still keep your eye moving to the beautiful sea views as you enter the home.





For the Master Bedroom, the goal was to create a sensual oasis in a room full of hard lines. The removal of the wall that originally separated the bath from the master bedroom and replace it with a clear glass spacer brought greater amplitude to the ambient, integrating the sleeping space.









BAHRAIN 3505

INTERIOR

CATEGORY: Apartment

LOCATION: MANAMAH

PROJECT YEAR: 2019

AREA: 178 m<sup>2</sup>



3505 Era Tower is an apartment on the thirty-fifth floor overlooking the sea located in Bahrain/ Seef in one of the most important and prestigious areas of the city extends over an area of 160 square meters.

The design of the space is a modern contemporary concept with some touches of minimalism. In the interior scene, shades of gray predominate, reflecting the contemporary taste for neutral tones to give comfort and luxurious space. the faded laminate floor tile was completely replaced with dark gray porcelain







In the kitchen area, an open concept was created in black integrating all furniture in a hidden way, we used a paneled subzero refrigerator, thus combining the kitchen and dining area in a very natural way, making a very aesthetically pleasing and sleek kitchen, clean but without leaving aside the functionality and space.







A collection of modern furniture was chosen for the living space to create a foyer experience but still keep your eye moving to the beautiful sea views as you enter the home and gives the project a touch of modernity and sophistication.

A harmonious material palette for the refurbishment brought richness and quality to the previously tired and drab interior, celebrating the post-modern influence but enriching the experience with natural light, and texture.



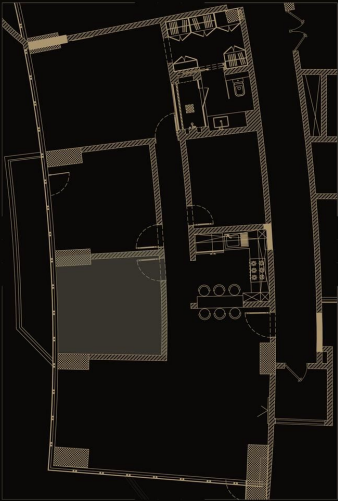




A lot of thought was put into proper planning that emphasizes the sea, for the Master Bedroom, the goal was to create a sensual oasis in a room full of hard lines. The bathroom was modified, the removal of the wall that initially separated it from the bedroom, and a glass panel was used instead bringing greater amplitude to the ambient, and integrating the spaces of creating an enjoyable bathing experience.









AL AMODY HOTEL

INTERIOR

CATEGORY: commerical

LOCATION: AL Khobar

PROJECT YEAR: 2013

AREA: 1072 m<sup>2</sup>

In line with our passion for working with creative and exciting design concepts, were commissioned to create the interior decoration of the AL Amodi Hotel. The project reflects the open, cosmopolitan character of AL Khobar city.

Our target was to create the universe even in a tiny space. The art of SOSAK featured the big wonderful world in a tiny space, illustrating vividly the humanistic feelings and nature ritual order. An ideal place for feasts and vacations.





Looking beyond the roof designed projecting over the entrance, visitors already feel the lure of the hotel's enticing interior. The first thing the visitors notice when entering the lobby is the sparkling crystal pieces hanging from a large chandelier along the reception desk and above the elevators and extending to the restaurant area specially designed to reflect the sunlight in the morning and a mixture of joy at night with a modern touch on a classic chandelier.

On the otherwise open ceiling, coffered ceiling panels define separate areas and zone the lounge, with a reflected ceiling marking the lounge area. The eye is then immediately drawn to the elevators, which are surrounded by gray brick stone fitted with graphite steel doors.





The interior design scheme juxtaposes the uniformity of material and color with distinct elements for each public zone to create a consistent yet diversified spatial experience. A palette of grey, brown, and beige has been expressed through the marble flooring and textured paint, while the brick wall and oriental fountain infuse warmth.







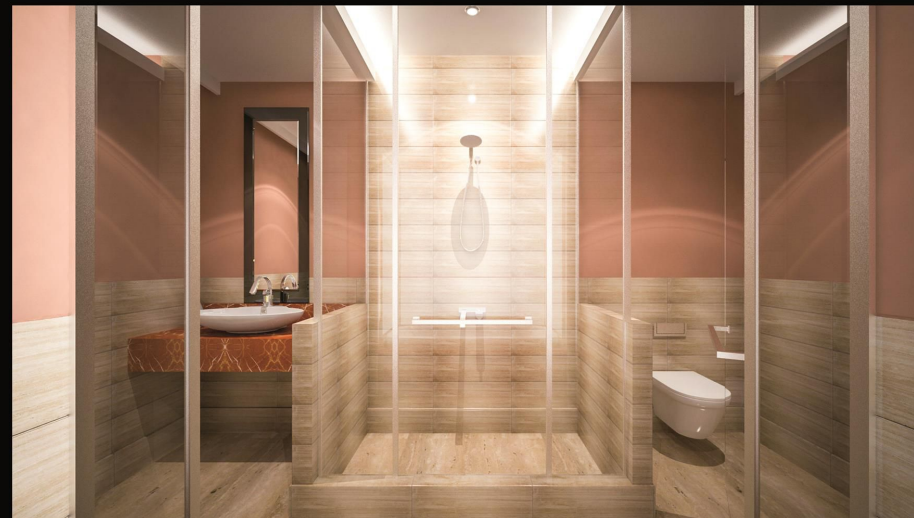
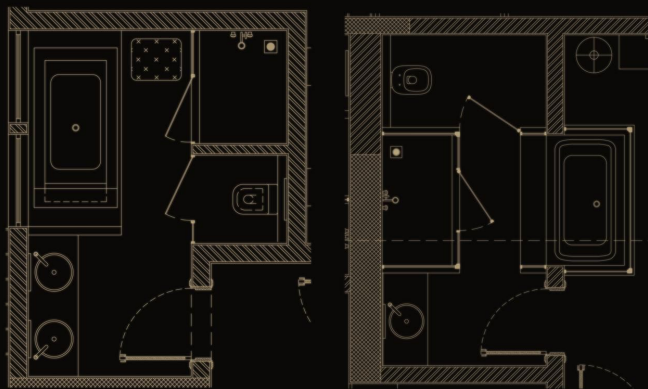
The classic simplicity of the building lends itself perfectly to the clean, balanced interior design by SOSAK. The hotel's ten suites and forty rooms shine in shades of cream and warm colors with modern furniture sitting well alongside contemporary details, while the bathrooms, varied according to their design.













Sosak team designed a wonderful geometric mosaic carpet along the lobby with an oriental fountain inspired by the old Damascene house to enhance the atmosphere of the sea and to enjoy the sound of softly flowing water.

Corridor design conveys a sense of warm and vigorous picture and leads to a series of suites and rooms, divided into 5 different typologies based on space, material palettes, colors, scale, and tailor-made elements.





Crowning this hospitality experience, the building allows for one more hidden gem, only best understood through experience. A 757 sq meters penthouse space with two VIP suites, where the design vocabulary of the hotel extends onto the penthouses with luxury features culminating at the business center and a big open swimming pool, bar, and gym to accommodate the needs of the hotel guests as well as visitors.

